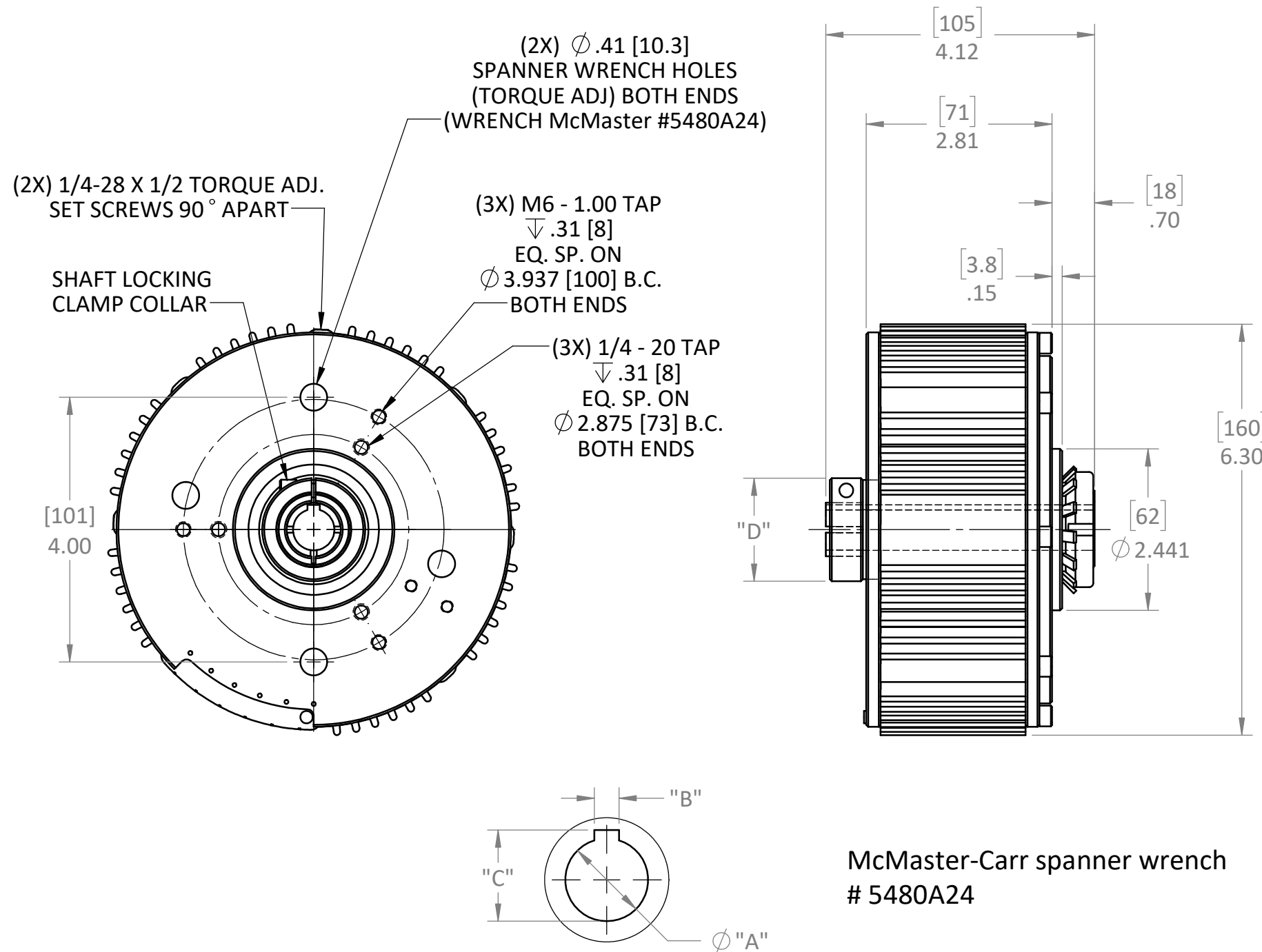
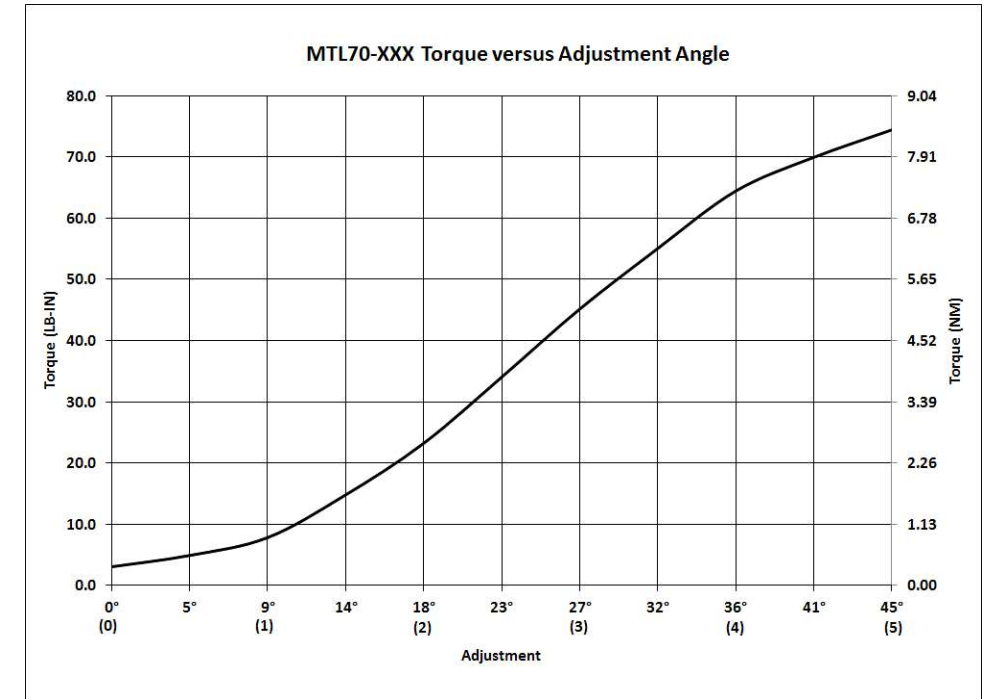
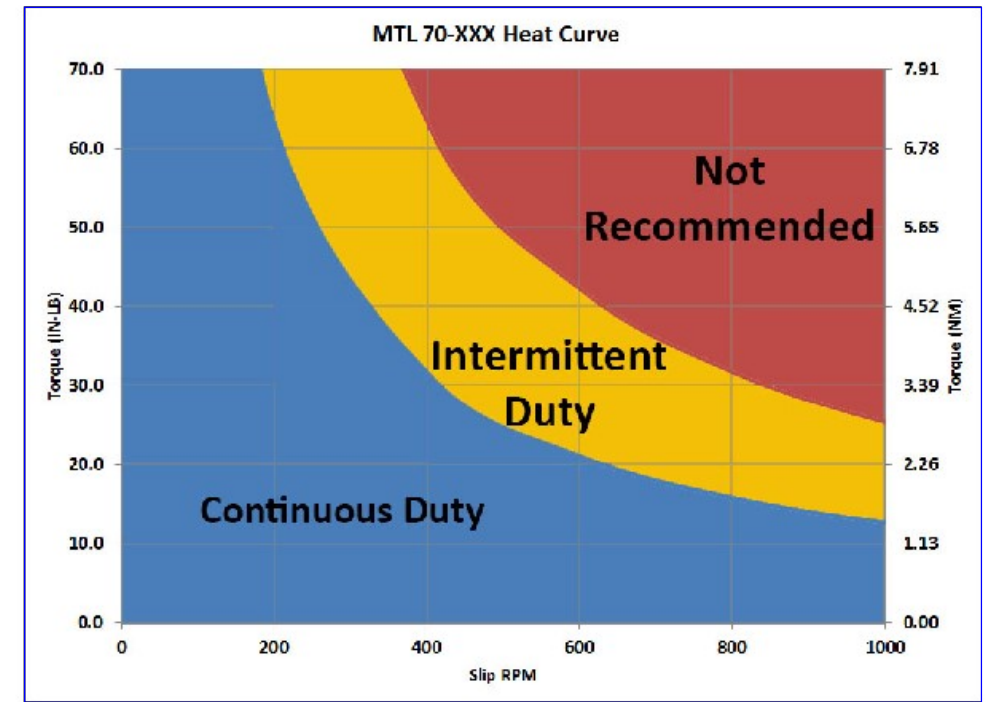


MODEL	TORQUE		INERTIA	HEAT DISSIPATION	WEIGHT	
MTL 70-XXX	3 - 70 lb-in	.33 - 7.9 Nm	220 x 10 <sup>-3</sup> in oz s <sup>2</sup>	150 WATTS	14.3 lbs	6.48 kg

REVISIONS			
REV.	ECN.	DESCRIPTION	DATE



McMaster-Carr spanner wrench # 5480A24



MODEL	"A" DIMENSION		"B" DIMENSION		"C" DIMENSION		"D" DIMENSION	
MTL70-5/8	.625 <sup>+0.001</sup>	15.88 <sup>+0.03</sup> mm	.187	4.75 mm	.709	18.00 mm	1.62	41.1 mm
MTL70-16	.630 <sup>+0.001</sup>	16.00 <sup>+0.03</sup> mm	.197	5.00 mm	.721	18.31 mm	1.65	41.9 mm
MTL70-19	.748 <sup>+0.001</sup>	19.00 <sup>+0.03</sup> mm	.236	6.00 mm	.858	21.79 mm	1.77	45.0 mm
MTL70-3/4	.750 <sup>+0.001</sup>	19.05 <sup>+0.03</sup> mm	.187	4.75 mm	.837	21.26 mm	1.75	44.5 mm
MTL70-7/8	.875 <sup>+0.001</sup>	22.22 <sup>+0.03</sup> mm	-	-	-	-	1.87	47.5 mm

USED ON MTL 70	SCALE 1:2	MATERIAL SEE PRT DWG	 43 TOWN FOREST ROAD OXFORD, MA 01540
UNLESS OTHERWISE SPECIFIED: ALL DIMENSIONS ARE IN INCHES TOLERANCES: DECIMAL: .XX ± .01 .XXX ± .005 ANGULAR: ± 1° GEN. CONCENTRICITY: .001 T.I.R. MACH. FILLETS: .010 R MACH. EDGES: .015 R OR CHMF. UNSPECIFIED RADII: .015 R IN MICROINCHES RMS 32 GEOMETRIC: TO MIL-ST'D. 8 REMOVE ALL BURRS & SHARP EDGES		FINISH SEE PRT DWG	
DRAWN R. A. 11/30/15		CHECKED	DESCRIPTION <b>CUT SHEET</b>
SIZE: B			DWG. NO. <b>MTL 70-XXX</b> REV.

THIS DRAWING IS THE PROPERTY OF MAGNETIC TECHNOLOGIES LTD. AND IS SUPPLIED ON THE EXPRESS CONDITION THAT IT SHALL NOT BE LENT, COPIED, REPRODUCED NO DISCLOSED TO ANY OTHER PERSON, IN WHOLE OR IN PART WITHOUT THE WRITTEN CONSENT OF MAGNETIC TECHNOLOGIES LTD.